



FALL 2018  
COLLECTION

RESTLESS NIGHTS

COLLECTIVELY CREATED  
INDIVIDUALLY EXPRESSED

CRTV // SCTY

USA // CAN  
Reg. No. 3-528-874  
MMVII

# Restless Nights



L I R A M F G . C O

F A L L 2 0 1 8

C O L L E C T I O N

C R T V / / S C T Y

FA //  
2018





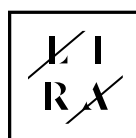
LIRA is a lifestyle brand that has set out to assemble an institute that cultivates creativity. A culmination of efforts have led to the establishment of LIRA's CREATIVE SOCIETY

A community that influences their generation by sharing the expressive talents of athletes, artist, musicians, designers, and photographers.

LIRA's plan is to broaden the view of fashion in the action sports market by integrating the personality of the creative culture. LIRA's ability to consistently evolve with the collective consciousness of the consumer enables them to venture beyond the boundaries of traditional action sports apparel.

Rooted in Southern California, LIRA's designs unify a curated mix of expression from the surf, skate, and street culture. LIRA is about connecting, engaging, and celebrating with its creative collaborators; elevating the lifestyle they represent.

LIRA is Collectively Created, Individually Expressed.



SWIM CATALOG  
FOUR WAY STRETCH

EXTENDED LENGTH

MADE IN THE USA

CARRY OVER



**JC3255 BELLEVUE DRESS**

BLACK | RUST  
XS - L | 100% Viscose  
USA: w/s \$27 msrp \$54    CAN: w/s \$32.50 msrp \$65



**JC3262 ELLA DRESS**

BLACK | RUST  
XS - L | 100% Viscose  
USA: w/s \$27 msrp \$54    CAN: w/s \$32.50 msrp \$65



**JC3205 HUDSON TOP**

IVORY | HEATHER CHARCOAL  
XS - L | 65% Cotton 35% Polyester  
USA: w/s \$17.50 msrp \$35    CAN: w/s \$21 msrp \$42



**JC3209 NOVA DENIM**

VINTAGE BLUE | VINTAGE BLACK  
25 - 31 | 99% Cotton 1% Stretch Denim & 80% Cotton 18% Polyester 2% Stretch Denim  
Boyfriend Fit Inseam: 29" Rise: 9" Leg Opening: 6"  
USA: w/s \$29 msrp \$58    CAN: w/s \$35 msrp \$70







**JC3261 OLIVIA TOP**

BLACK | RUST  
XS - L | 100% Viscose  
USA: w/s \$24 msrp \$48    CAN: w/s \$27.50 msrp \$55



**JC3206 CROSBY TOP**

IVORY | HEATHER CHARCOAL  
XS - L | 65% Cotton 35% Polyester  
USA: w/s \$17.50 msrp \$35    CAN: w/s \$21 msrp \$42



**JC3216 CHLOE SWEATER**

BLACK | TAN  
XS - L | 79% Cotton 21% Polyester  
USA: w/s \$18 msrp \$36    CAN: w/s \$22.50 msrp \$45



**JC3260 WRAP ME UP SKIRT**

BLACK | RUST  
XS - L | 100% Viscose  
USA: w/s \$21 msrp \$42    CAN: w/s \$25 msrp \$50



**JC3218 COLUMBUS JACKET**

BLACK | ARMY  
XS - L | 100% Tencel  
USA: w/s \$34 msrp \$68    CAN: w/s \$40 msrp \$80

**JC3212 DANNI JUMPSUIT**

BLACK | ARMY  
XS - L | 100% Tencel  
USA: w/s \$37 msrp \$74    CAN: w/s \$45 msrp \$90



**JC3211 MEADOWS DRESS**

BLACK  
XS - L | 100% Viscose  
USA: w/s \$35 msrp \$70    CAN: w/s \$42.50 msrp \$85



FOUR WAY STRETCH

SWIM CATALOG

EXTENDED LENGTH

MADE IN THE USA

CARRY OVER







**JC3201 DARKER NIGHTS DRESS**

BLACK | BRICK  
XS - L | 100% Viscose  
USA: w/s \$26 msrp \$52    CAN: w/s \$32.50 msrp \$65



**JC3202 ALABAMA TOP**

BLACK | BRICK  
XS - L | 100% Viscose  
USA: w/s \$19 msrp \$38    CAN: w/s \$22.50 msrp \$45





**JC3246 SOCIETY PRIDE SWEATSHIRT**

HEATHER GREY | CLAY  
 XS - L | 56% Cotton 44% Polyester Fleece 280g  
**USA:** w/s \$24 msrp \$48    **CAN:** w/s \$30 msrp \$60



**JC3217 BOWERY SWEATSHORT**

BLACK | HEATHER GREY  
 XS - L | 60% Cotton 40% Polyester Fleece 260g  
**USA:** w/s \$16 msrp \$32    **CAN:** w/s \$20 msrp \$40



**JC3214 CROSS ME UP BODYSUIT**

BLACK | SPARROW  
 XS - L | 92% Polyester 8% Spandex  
**USA:** w/s \$20 msrp \$40    **CAN:** w/s \$25 msrp \$50



**JC3215 IMPALA JOGGER**

BLACK | DARK KHAKI  
 XS - L | 98% Cotton 2% Stretch Twill  
**USA:** w/s \$25 msrp \$50    **CAN:** w/s \$32.50 msrp \$65





FOUR WAY STRETCH

SWIM CATALOG

EXTENDED LENGTH

MADE IN THE USA

CARRY OVER



**JC3219 ISABELLA DRESS**

BLACK | SPARROW  
 XS - L | 100% Viscose  
**USA:** w/s \$29 msrp \$58      **CAN:** w/s \$35 msrp \$70



**JC3231 CAMARO JACKET**

BLACK  
 XS - L | 100% Vegan Leather  
**USA:** w/s \$45 msrp \$90      **CAN:** w/s \$55 msrp \$110



**JC3254 JACK TOP**

BLACK | WHITE  
 XS - L | 95% Viscose 5% Spandex  
**USA:** w/s \$20 msrp \$40      **CAN:** w/s \$25 msrp \$50



**JC3203 SWING LOW DRESS**

BLACK | SPARROW  
 XS - L | 100% Viscose  
**USA:** w/s \$27 msrp \$54      **CAN:** w/s \$32.50 msrp \$65











**JC3207 HIGHLANDS TOP**

BLACK | SPARROW  
XS - L | 100% Viscose  
USA: w/s \$24 msrp \$48    CAN: w/s \$30 msrp \$60



**JC3236 SAHARA SWEATER**

BLACK | IVORY  
XS - L | 100% Cotton  
USA: w/s \$30 msrp \$60    CAN: w/s \$37.50 msrp \$75



**JC3239 TORINO DENIM**

BLACK  
25 - 31 | 98% Cotton 2% Stretch Denim  
High Rise Skinny Fit Inseam: 28" Rise: 9.5" Leg Opening: 5"  
USA: w/s \$29 msrp \$58    CAN: w/s \$35 msrp \$70



**JC3242 WASSON JUMPSUIT**

BLACK | COPPER  
XS - L | 100% Tencel  
USA: w/s \$32 msrp \$64    CAN: w/s \$37.50 msrp \$75

FOUR WAY STRETCH  
SWIM CATALOG

EXTENDED LENGTH

MADE IN THE USA

CARRY OVER



**JC2803 MIRANDA CARDIGAN**

DUSTY ROSE | WINE  
XS/S - M/L | 55% Polyester 45% Acrylic  
USA: w/s \$32 msrp \$64    CAN: w/s \$37.50 msrp \$75



**JC3258 LIAM DRESS**

BLACK | COPPER  
XS - L | 70% Modal 30% Polyester  
USA: w/s \$23 msrp \$46    CAN: w/s \$27.50 msrp \$55



**JC3257 POLARA JACKET**

WASHED BLUE | WASHED BLACK  
XS - L | 100% Cotton Denim & 98% Cotton 2% Stretch Denim  
USA: w/s \$40 msrp \$80    CAN: w/s \$50 msrp \$100







**JD3237 MASON TOP**

BLACK | SPARROW  
XS - L | 50% Viscose 50% Polyester  
USA: w/s \$13 msrp \$26    CAN: w/s \$16 msrp \$32



**JC3208 ABIGAIL SKIRT**

BLACK | SPARROW  
XS - L | 100% Viscose  
USA: w/s \$25 msrp \$50    CAN: w/s \$30 msrp \$60





**JC3253 COBAIN DRESS**

BLACK | IVORY  
XS - L | 85% Cotton 15% Viscose  
USA: w/s \$26 msrp \$52    CAN: w/s \$32.50 msrp \$65

**JC3213 MERCER SWEATSHIRT**

CHARCOAL | ORCHID  
XS - L | 56% Cotton 44% Polyester Fleece 280g  
USA: w/s \$25 msrp \$50    CAN: w/s \$30 msrp \$60





**JC3252 BIRMINGHAM TOP**

BLACK | IVORY  
XS - L | 85% Cotton 15% Viscose  
USA: w/s \$24 msrp \$48    CAN: w/s \$30 msrp \$60



**JC3229 PORTLAND SWEATSHIRT**

BLACK | ORCHID  
XS - L | 56% Cotton 44% Polyester Fleece 280g  
USA: w/s \$39 msrp \$78    CAN: w/s \$45 msrp \$90



**JC3240 FALCON DENIM**

WASHED BLUE | WASHED BLACK  
25 - 31 | 100% Cotton Denim & 98% Cotton 2% Stretch Denim  
Mom Fit Inseam: 26.5" Rise: 11" Leg Opening: 6"  
USA: w/s \$29 msrp \$58    CAN: w/s \$35 msrp \$70

CARRY OVER

MADE IN THE USA

EXTENDED LENGTH

SWIM CATALOG

FOUR WAY STRETCH

FOUR WAY STRETCH

FOUR WAY STRETCH

FOUR WAY STRETCH

FOUR WAY STRETCH









**JC3226 AMELIA DRESS**

BLACK | BERRY  
 XS - L | 53% Silk 47% Viscose  
**USA:** w/s \$26 msrp \$52    **CAN:** w/s \$32.50 msrp \$65



**JC3230 TAKE ME BACK TOP**

BLACK | COPPER  
 XS - L | 70% Modal 30% Polyester  
**USA:** w/s \$19 msrp \$38    **CAN:** w/s \$22.50 msrp \$45



**JC3245 SKYLAR BODYSUIT**

BLACK | BERRY  
 XS - L | 98% Polyester 2% Spandex  
**USA:** w/s \$19 msrp \$38    **CAN:** w/s \$22.50 msrp \$45



**JC3232 SWEETER DAYS DRESS**

BLACK  
 XS - L | 100% Viscose  
**USA:** w/s \$34 msrp \$68    **CAN:** w/s \$40 msrp \$80



FOUR WAY STRETCH



SWIM CATALOG



EXTENDED LENGTH



MADE IN THE USA



CARRY OVER







JC3234 CARMEN JACKET

BLACK | BROWN  
XS - L | 100% Tencel  
USA: w/s \$45 msrp \$90    CAN: w/s \$55 msrp \$110



JC3249 DUNLAP DRESS

IVORY | BRICK  
XS - L | 100% Viscose  
USA: w/s \$26 msrp \$52    CAN: w/s \$32.50 msrp \$65



JC3243 RIVIERA PANT

IVORY | BRICK  
XS - L | 100% Viscose  
USA: w/s \$26 msrp \$52    CAN: w/s \$32.50 msrp \$65



**JC3244 CLINTON TOP**

IVORY | BRICK

XS - L | 100% Viscose

USA: w/s \$26 msrp \$52

CAN: w/s \$32.50 msrp \$65

**JC3238 JUSTINE SKIRT**

BLACK

XS - L | 98% Cotton 2% Stretch Denim

USA: w/s \$25 msrp \$50

CAN: w/s \$30 msrp \$60



**JC3251 JACKSON SWEATER**

HEATHER GREY | HEATHER BURGUNDY  
XS - L | 80% Cotton 20% Nylon  
USA: w/s \$26 msrp \$52      CAN: w/s \$32.50 msrp \$65



**JC3269 ALEX TOP**

IVORY | BLACK  
XS - L | 100% Viscose  
USA: w/s \$25 msrp \$50      CAN: w/s \$30 msrp \$60









JC3266 BOROUGH BRALETTE

BLACK | IVORY  
XS - L | 85% Nylon 15% Spandex  
USA: w/s \$14 msrp \$28    CAN: w/s \$17.50 msrp \$35



JC3268 AFTER HOURS BRALETTE

BLACK | BLUSH  
XS - L | 97% Polyester 3% Spandex  
USA: w/s \$14 msrp \$28    CAN: w/s \$17.50 msrp \$35



JC3267 BUSHWICK BRAMI

BLACK | WHITE  
XS - L | 95% Polyester 5% Spandex  
USA: w/s \$14 msrp \$28    CAN: w/s \$17.50 msrp \$35



**JD3271 HARD LUCK TANK**

BLACK | BRICK  
XS - L | 100% Cotton  
USA: w/s \$14 msrp \$28

CAN: w/s \$17 msrp \$34



**JD3270 LIP SYNC TANK**

BLACK | HEATHER GREY  
XS - L | 100% Cotton  
USA: w/s \$14 msrp \$28

CAN: w/s \$17 msrp \$34



**JD3279 RESTLESS NIGHTS TANK**

BLACK | IVORY  
XS - L | 100% Cotton  
USA: w/s \$14 msrp \$28

CAN: w/s \$17 msrp \$34





**JD3278 HARD LUCK CREW**

BLACK | HEATHER GREY  
XS - L | 100% Cotton

USA: w/s \$14 msrp \$28      CAN: w/s \$17.50 msrp \$35



**JD3274 RESTLESS NIGHTS CREW**

BLACK | IVORY  
XS - L | 100% Cotton

USA: w/s \$14 msrp \$28      CAN: w/s \$17.50 msrp \$35



FOUR WAY STRETCH

SWIM CATALOG

EXTENDED LENGTH

MADE IN THE USA

CARRY OVER



**JD3275 HIGH VOLTAGE CREW**

BLACK | BRICK  
XS - L | 100% Cotton  
USA: w/s \$14 msrp \$28    CAN: w/s \$17.50 msrp \$35



**JD3277 SOCIETY PRIDE CREW**

BLACK | HEATHER GREY  
XS - L | 100% Cotton  
USA: w/s \$14 msrp \$28    CAN: w/s \$17.50 msrp \$35



**JD3276 SUNSET CACTUS CREW**

BLACK | IVORY  
XS - L | 100% Cotton  
USA: w/s \$14 msrp \$28    CAN: w/s \$17.50 msrp \$35



**JD3272 YING YANG LS**

BLACK | IVORY

XS - L | 100% Cotton

USA: w/s \$16 msrp \$32

CAN: w/s \$20 msrp \$40



**JD3273 EASY BABY LS**

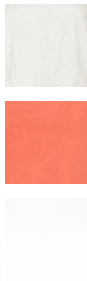
BRICK | HEATHER GREY

XS - L | 100% Cotton

USA: w/s \$16 msrp \$32

CAN: w/s \$20 msrp \$40

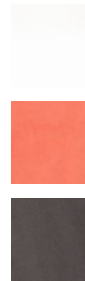




**JD3280 SOLID MUSCLE TANK**

BLACK | IVORY | BRICK | HEATHER GREY  
XS - L | 100% Cotton

**USA:** w/s \$12 msrp \$24    **CAN:** w/s \$15 msrp \$30



**JD3059 SOLID CREW NECK**

BLACK | IVORY | BRICK | HEATHER GREY  
XS - L | 100% Cotton

**USA:** w/s \$12 msrp \$24    **CAN:** w/s \$15 msrp \$30



**JD3281 SOLID LONG SLEEVE**

BLACK | IVORY | BRICK | HEATHER GREY  
XS - L | 100% Cotton

**USA:** w/s \$14 msrp \$28    **CAN:** w/s \$17.50 msrp \$35



FOUR WAY STRETCH



SEWN CATALOG



EXTENDED LENGTH



MADE IN THE USA



CARRY OVER



**SALES CONTACTS**

**LIRA CLOTHING**  
**1169 N. KNOLLWOOD CIR.**  
**ANAHEIM, CA 92801**  
**O. 714-676-8624**

BRIAN BARLOW  
NATIONAL SALES MGR  
D. 562.889.2717  
barlow@liraclotthing.com

AMELIA RENAUD  
CALIFORNIA & NEVADA  
C. 714.931.5896  
amelia.n.renaud@gmail.com

EVA HUME  
PACIFIC NORTHWEST  
C. 303.886.7791  
eva@whitefangsales.com

TYTUS FRIAR  
ROCKIES  
C. 303.884.0368  
tytusfriar@mac.com

RYAN LANGHORNE  
SOUTHEAST & S. MID ATLANTIC  
C. 321.795.5892  
r.langhorne1@gmail.com

ALISON LANDHOLT  
NORTH EAST &  
TRI STATE  
C. 858.232.5147  
alisonlandholt@gmail.com

**INTERNATIONAL**

**LIRA CANADA INC.**  
**20825 RUE DAOUST,**  
**SAINTE-ANNE-DE-BELLEVUE**  
**QC H9X 0A3**  
**CANADA**

MARC-A. SAUCIER  
CANADIAN SALES MGR  
C. 514.919.6775  
marc@liraclotthing.com

JON H. GENIER  
QUEBEC & MARITIME  
C. 450.542.0396  
Jonh@agencejg.com

J.S. Weir  
WESTERN CANADA  
C. 778.320.9347  
JS@waydangerous.com

